

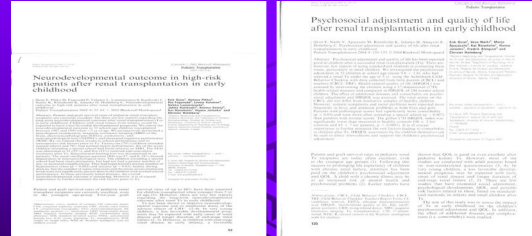
Quality of life in adult survivors of pediatric kidney transplantation

Erik Qvist
Hospital for Children and Adolescents
University of Helsinki

8.5.2010

41st EWOPA

Previous work



- Qvist et al. Pediatric Transplantation 2002;6:53
- Qvist et al. Pediatric Transplantation 2004;8:120

8.5.2010

41st EWOPA

Patients

- 21 of 32 in the original cohort
 - 3 deceased, 8 refused
- Tx age 2.5 ± 1.1
- Assessment
 - Age 21.1 ± 2.0 (17.8-24.3)
 - 18 years after Tx
 - 10 years after first investigations

8.5.2010

41st EWOPA

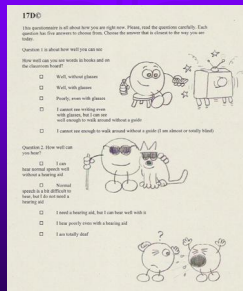
Assessment

	Adults	Children	
Psychosocial adjustment	ASR	CBCL (assessed by parents)	/ASEBA Achenbach
QOL	15D	17D	Generic QOL questionnaires
Cognitive outcome	Education	WISC	

8.5.2010

41st EWOPA

17D QOL questionnaire



8.5.2010

41st EWOPA

Children IQ

- verbal 87 (65-108)
- non-verbal 87 (55-118)
- 110-120 2 (6%)
- 90-110 14 (42%)
- 70-90 14 (42%)
- <70 3 (9%)

8.5.2010

41st EWOPA

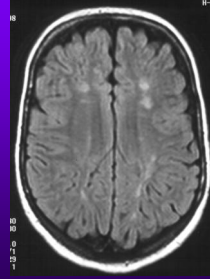
Children Normal findings

- Neuroradiology 45%
- Neurol exam 75%
- IQ > 80 67%
- Normal class 79%

8.5.2010

41st EWOPA

Border-zone infarcts



- Brain MRI
- Gr 2 watershed/
border-zone infarct

8.5.2010

41st EWOPA

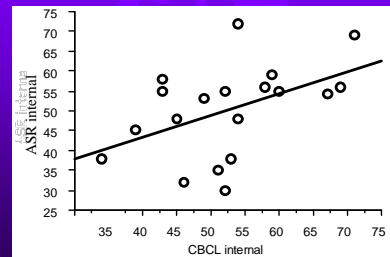
Results Pathological scores

Pathological problem scores	Children (32)	Adults (21)
	CBCL N (%)	ASR N (%)
Total	3 (9)	0
External	3 (9)	2 (10)
Internal	2 (6)	2 (10)

8.5.2010

41st EWOPA

Correlation Adult ASR vs. children CBCL

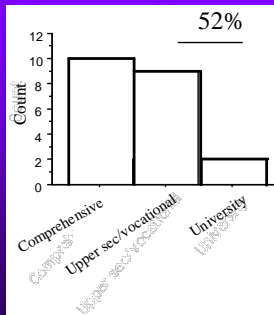


R=0.47
P=0.04

8.5.2010

41st EWOPA

Adults Education



8.5.2010

41st EWOPA

Brain ischemia and education

	Watershed infarcts	
	Norm	PATH
University	1	1
Upper sec / vocational	4	6
Compulsory	5	4

8.5.2010

41st EWOPA

QOL assessed by children

HRQOL profiles

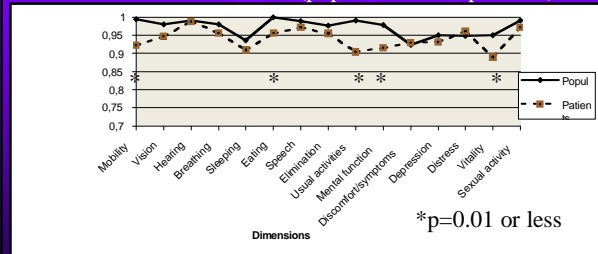


8.5.2010

41st EWOPA

15 D adults

Total 15D score 0.94 ± 0.07 (population 0.99, $p = 0.045$)

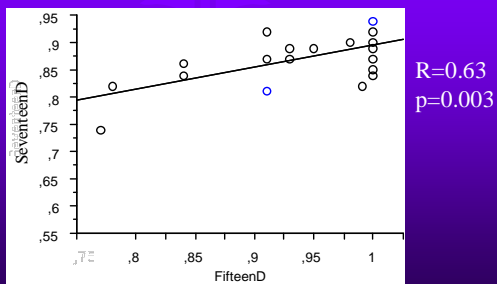


Control group: Arnes S., et al. Health and the use of health services in Finland, National Inst of Health and welfare, 1998

8.5.2010

41st EWOPA

Correlation Childhood vs adult QOL



8.5.2010

41st EWOPA

Conclusions

- The long term outcome is excellent in previous *high risk* patients
- Childhood psychosocial adjustment and QOL *predict* the adult outcome

8.5.2010

41st EWOPA