

EWOPA Annual Conference 2011

'The child at heart'

**Collaborative working for the child with
complex family needs**

Munira Asaria¹ and Victoria Barr²

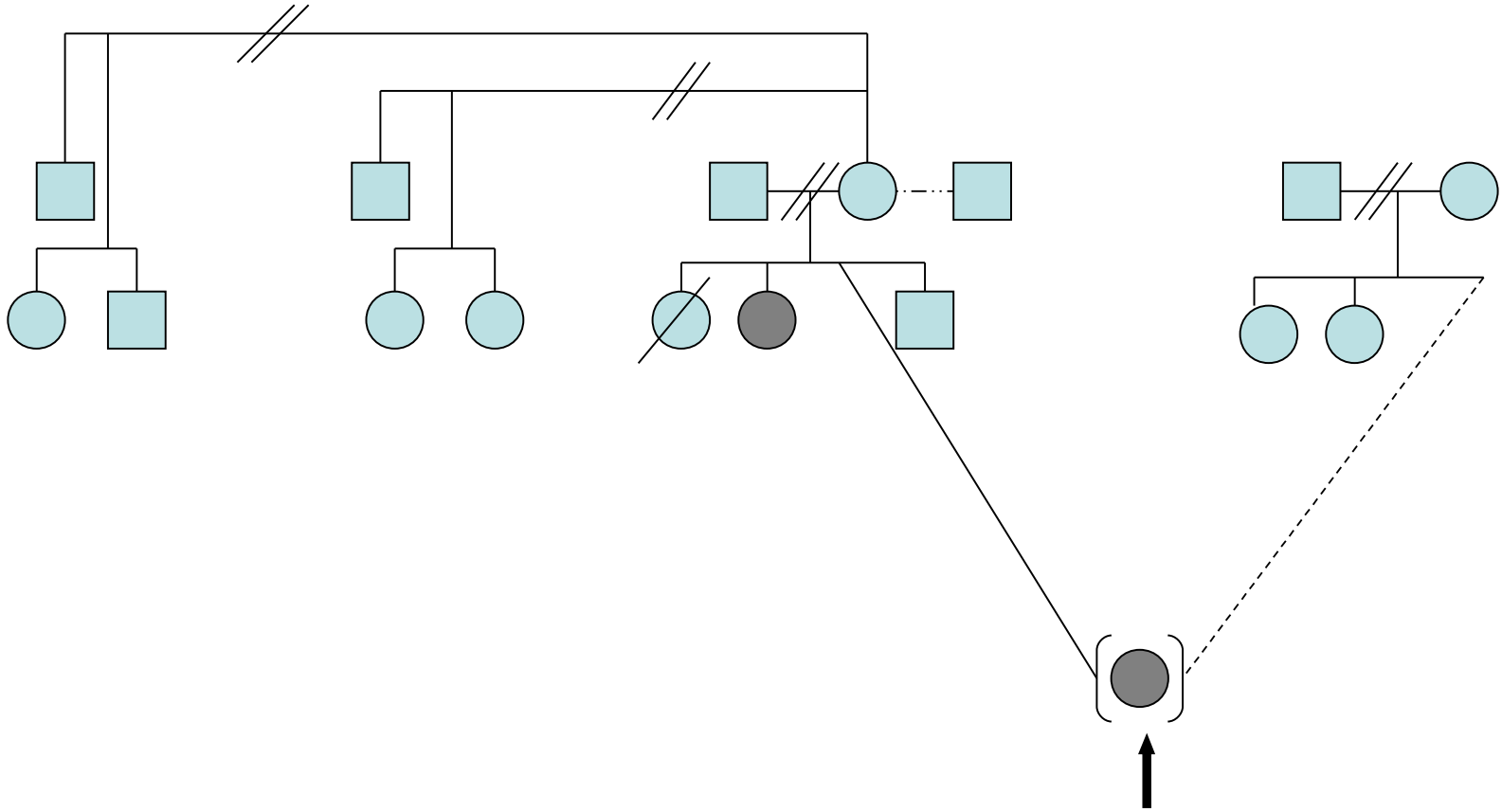
Specialist Social Worker¹, Senior Play Specialist²,

Department of Paediatric Nephrology, Evelina Children's Hospital,
Westminster Bridge Road, London SE1 7EH

PRESENTATION

- **11 year old girl**
- **No previous experience of hospital**
- **Failing to thrive**
- **End stage renal failure**
- **Long inpatient stay**

FAMILY HISTORY



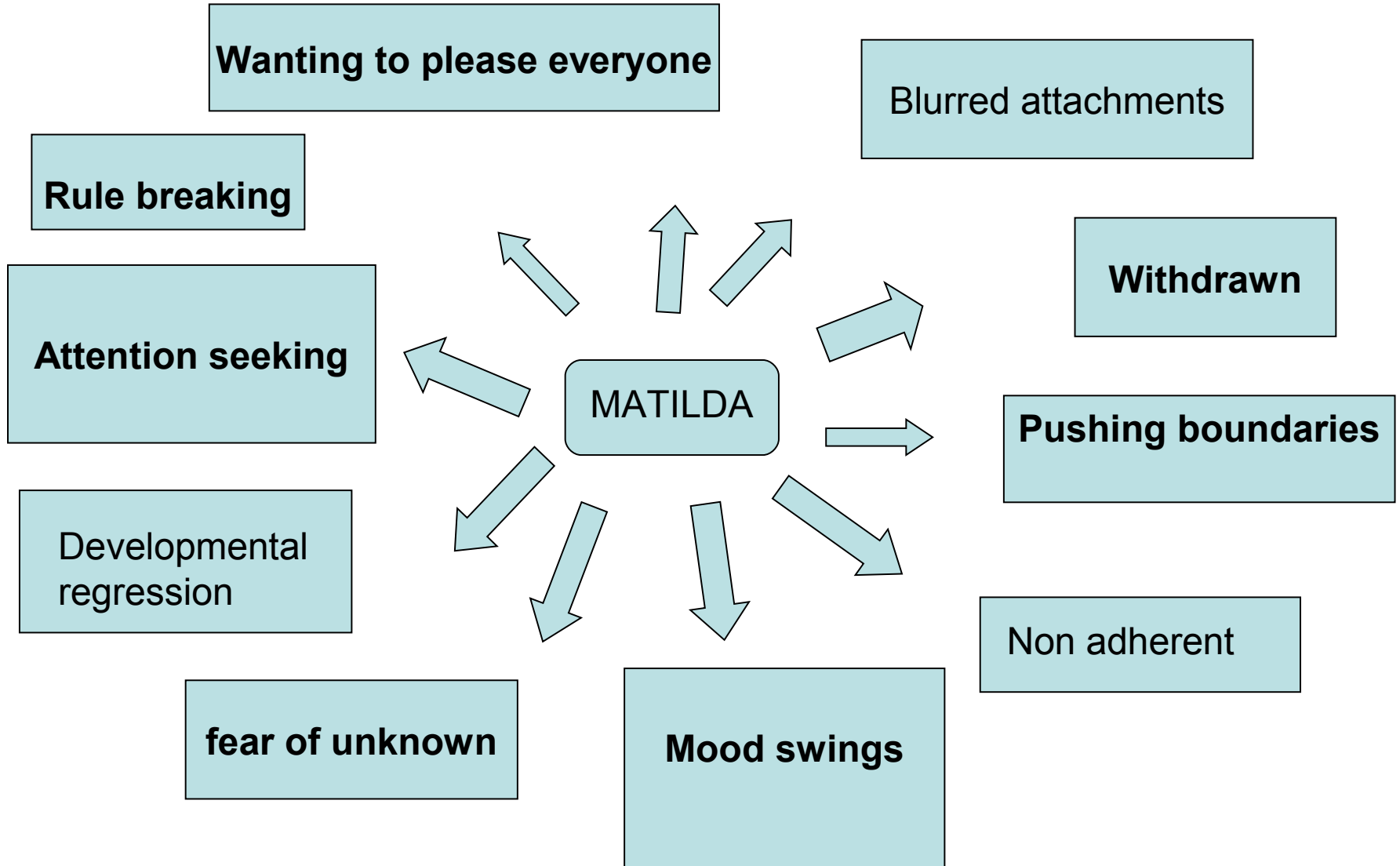
SOCIAL HISTORY

- **Little contact with her birth family**
- **Foster parents had separated two years previous to her admission**
- **Aware of birth family but considered the foster family as where she belonged**
- **Birth and foster family had an amicable relationship prior to admission**

THE CHILD'S HOSPITAL ADMISSION

- **Birth family wanted to become more involved in care**
- **Care during admission was split between birth family and foster family**
- **Legal proceedings were started by the two different families to gain care of Matilda**
- **Constant comparisons were made between Matilda and her older sister**

THE CHILD'S BEHAVIOUR



A COLLABORATIVE APPROACH

- Legal**
- Parents**
- Multi disciplinary team**
- Medical team**
- External agencies**
- The child**

“The most commonly identified practice shortcomings expressed in the 40 Serious Case Reviews included inadequate sharing of information, poor assessments, ineffective decision making and lack of inter-agency working.”

A Review of Serious Case Reviews (DOH) 2002